

Incubated Shakers

Stackable up to three units for maximum utilization of lab spaces. Multi-purpose incubated shakers feature a wide range of temperature control and large chamber volume.

REMOTE CONTROL
with your **MOBILE DEVICE**



Incubated Shakers

Do you want to remote control equipment through a smartphone?



Wherever and whenever you are, you can simply monitor the real-time status of equipment in your lab.



Stackable / Chamber - ISS
Stackable up to max. three units



Floor Standing - ISF
Large capacity



Benchtop - IST
Limited lab space

PERFORMANCE

- Wide speed range even with heavy workload.

- Ideal DD(Direct Drive) brushless motor and triple cam system support heavy load, quiet, maintenance free operation and deliver high torque at high speeds and smooth rotation.
(for ISF-7100/7200, ISS-7100/7200)

- Equipped with a maintenance-free BLDC motor to generate smooth, quiet, uniform, and yet powerful shaking motion.
(for IST-3075/4075, ISS-3075/4075)

500
rpm

※ Model dependent.

- Wide temperature range with high temperature uniformity.

- High-velocity fan ensures uniform temperature distribution and rapid thermal recovery after door open.
- Air-tight silicone door seal to provide excellent temperature uniformity.

- Microprocessor PID control.

- Our incubated shakers' line up are designed to offer highly stable heating and shaking control thanks to it's microprocessor PID controller.

- Three point temperature calibration.

- Automatic tuning.

- Best effort run function

- Sudden halt of the operation can ruin your important projects. Don't worry about your project being interrupted by any excessive workload such as unbalanced load placement, unusual vibrations caused from unstable floor or external shock.

In order to prevent the situation, our incubated shakers with it's best effort function intelligently manages its rpm to keep shaking even workload is out of its capacity.

We value delivering the best result for your precious project.





※ Model dependent.

CONVENIENCE

- Intuitive touch screen LCD controller with easy icons and logical menus.
- Easy-set digital timer for shaking operation. (1 min. to 999 hr. 59 min.)



- Built-in RS-232 port and USB port for external control and data collection.

- Corrosion resistance stainless steel interior.
- Repetitive task can be easily performed as the platform stops where it starts.
- Stopping the shaking platform always at the same position is highly beneficial for automated dosing or sampling process.
- Pleasant test environment by the smooth acceleration and deceleration control.
- Smooth start and smooth stop function prevents chemical spills from flasks or test tubes.

- Clear observation of samples without affecting inner chamber's environment and convenient sample loading structure.



SAFETY

- Automatic run after power interruption.
- Temperature and shaking speed deviation alarm.
- Over-current protection.
- Mechanical over-temperature limiter (High)
- Environment-friendly CFC-free refrigerant.
- Audible and visible open door alarms.

Stackable model ISS-7100(R) / 7200(R) Triple stackable

- Maximize your space with our triple stackable incubated shaker!
 - This triple stackable model is highly recommended for users who want to maximize limited space. Have three units in your lab while taking up minimal space. In addition, high rpm up to max. 250 is still guaranteed even when you stack up 3 units.
- Large shaking capacity chamber allows users to freely organize different size of samples.
 - 198L chamber can accommodate six of 4L flasks and also thirty nine of 250ml flasks. You can make the capacity triple, if you stack three units.

- Lift up opening door and slide out platform enables easy sample handling.
 - Door is opened upward and stayed open for hands-free handling. Slide type universal platform let you access to all samples, even ones placed at the back.
- Don't fit yourself to the unit, fit your unit to yourself!
 - Optional stand is available and highly recommended for comfort use. Setting your incubated shaker at your height let you feel totally relaxed when you use it anytime.

- The unit comes with base, beneficial for easy mobility during installation or relocation.
- Built-in electrical outlet with a safety cover inside the chamber.
- Easy-access drain system with a quick disconnect valve offers great convenience to clean up of spills.
- Stalled platform check.
- Electronic temperature limiter (High/Low)

Specifications

Model		ISS-7100		ISS-7100R		ISS-7200		ISS-7200R	
Temp.	Range (°C / °F)	Amb. +10 to 80 / Amb. +18 to 176		Amb. -20 (Min. +4) to 80 / Amb. -36 (Min. +72) to 176		Amb. +10 to 80 / Amb. +18 to 176		Amb. -20 (Min. +4) to 80 / Amb. -36 (Min. +72) to 176	
	Fluctuation at 37°C in flask (±°C / °F)	0.1 / 0.18							
	Variation at 37°C in flask (±°C / °F)	0.5 / 0.90							
	Refrigerator (Hp)	-		1/6Hp		-		1/6Hp	
Shaking system	Motion type	Orbital							
	Amplitude size (mm / inch, dia.)	25.4 / 1				50.8 / 2			
	Speed range (rpm)	30 to 400 (stackable : 30 to 250)				30 to 300 (stackable : 30 to 200)			
	Accuracy	±1 % of set speed (>100rpm) / ±1 (≤100rpm)							
	Timer	1 min. to 999 hr 59 min.							
	Max. Load (kg / lbs)	20 / 44.1 at 400 rpm 15 / 33.1 at 250 rpm (stacked) 20 / 33.1 at 200 rpm (stacked)				20 / 44.1 at 300 rpm 15 / 33.1 at 200 rpm (stacked) 20 / 44.1 at 150 rpm (stacked)			
Dimension	Volume (L / cu ft)	198 / 7.0							
	Platform (WxD, mm / inch)	755x520 / 29.7x20.5							
	Interior (WxDxH, mm / inch)	809x624x393 / 31.9x24.6x15.5							
	Exterior ³⁾ (WxDxH, mm / inch)	1310x996x755 / 51.6x39.2x29.7							
	Net weight (kg / lbs)	365 / 804.7		375 / 826.7		365 / 804.7		375 / 826.7	
Electrical requirements (230V)		60Hz, 3.7A	50Hz, 3.7A	60Hz, 5.6A	50Hz, 5.6A	60Hz, 3.7A	50Hz, 3.7A	60Hz, 5.6A	50Hz, 5.6A
Cat. No.		AAH238131K	AAH238132K	AAH238231K	AAH238232K	AAH239131K	AAH239132K	AAH239231K	AAH239232K
Electrical requirements (120V)		60Hz, 7.1A		60Hz, 10A		60Hz, 7.1A		60Hz, 10A	
Cat. No.		AAH238115U		AAH238215U		AAH239115U		AAH239215U	

1) Main body dimension with base.

*Temp. change may occur during automatic defrost. (for ISS-7100R/7200R)

Chamber model ISS-3075(R) / 4075(R)

Double stackable

- Clear observation of samples.
- Clear observation of samples without affecting inner chamber's environment thanks to the transparent viewing window with bright LED lamps.
- Two adjustable-height shelves provided allow static incubation or refrigeration, which increase storage capacity.
- Retractable foot caster (optional), beneficial for easy mobility during installation or relocation.
- Built-in electrical outlet with a safety cover inside the chamber.
- Easy-access drain system with a quick disconnect valve offers great convenience to clean up of spills.
- Stalled platform check.
- Electronic temperature limiter (High/Low)

Model		ISS-3075		ISS-3075R		ISS-4075		ISS-4075R	
Temp.	Range (°C / °F)	Amb. +5 to 80 / Amb. +9 to 176		Amb. -20 (Min. +4) to 80 / Amb. -36 (Min. +72) to 176		Amb. +5 to 80 / Amb. +9 to 176		Amb. -20 (Min. +4) to 80 / Amb. -36 (Min. +72) to 176	
	Fluctuation at 37°C in flask (±°C / °F)	0.1 / 0.18							
	Variation at 37°C in flask (±°C / °F)	0.5 / 0.90							
	Refrigerator (Hp)	-		1/6Hp		-		1/6Hp	
Shaking system	Motion type	Orbital							
	Amplitude size (mm / inch, dia.)	19.1 / 0.75							
	Speed range (rpm)	20 to 500 (stackable : 20 to 250)							
	Accuracy	±1 % of set speed (>100rpm) / ±1 (≤100rpm)							
	Timer	1 min. to 999 hr 59 min.							
	Max. Load (kg / lbs)	10 / 22.0 at 500 rpm 15 / 33.1 at 400 rpm 15 / 33.1 at 250 rpm (stacked)				10 / 22.0 at 500 rpm 21 / 46.3 at 400 rpm 21 / 46.3 at 250 rpm (stacked)			
Dimension	Volume (L / cu ft)	80 / 2.8				150 / 5.3			
	Platform (WxD, mm / inch)	350x350 / 13.8x13.8				450x450 / 17.7x17.7			
	Interior (WxDxH, mm / inch)	440x440x418 / 17.3x17.3x16.5				540x540x518 / 21.3x21.3x20.4			
	Exterior (WxDxH, mm / inch)	578x815x854 / 22.8x32.1x33.6				678x895x934 / 26.7x35.2x36.8			
	Shelves (Standard / Max)	2 / 8							
	Net weight (kg / lbs)	153 / 337.3		160 / 352.7		183 / 403.4		190 / 418.9	
Electrical requirements (230V)		60Hz, 6.2A	50Hz, 6.2A	60Hz, 7.9A	50Hz, 7.9A	60Hz, 6.2A	50Hz, 6.2A	60Hz, 7.9A	50Hz, 7.9A
Cat. No.		AAH23431K	AAH23432K	AAH23531K	AAH23532K	AAH23631K	AAH23632K	AAH23731K	AAH23732K
Electrical requirements (120V)		60Hz, 9.5A		60Hz, 13A		60Hz, 9.5A		60Hz, 13A	
Cat. No.		AAH23415U		AAH23515U		AAH23615U		AAH23715U	

*Temp. change may occur during automatic defrost. (for ISS-3075R/4075R)

Specifications

Floor standing model ISF-7100(R) / 7200(R)

- Clear observation of samples
- Transparent top viewing window with bright LED lamps.
- The lid is inclined gently towards the front for easy observation of samples in the chamber.
- Gas spring lid supports providing smooth motion, soft opening and closing.
- Sturdy foot caster, beneficial for easy mobility during installation or relocation.
- Easy-access drain system with a quick disconnect valve offers great convenience to clean up of spills.
- Electronic temperature limiter (High/Low)

Model		ISF-7100	ISF-7100R	ISF-7200	ISF-7200R	
Temp.	Range (°C / °F)	Amb. +5 to 80 / Amb. +9 to 176	Amb. -20 (Min. +4) to 80 / Amb. -36 (Min. +7.2) to 176	Amb. +5 to 80 / Amb. +9 to 176	Amb. -20 (Min. +4) to 80 / Amb. -36 (Min. +7.2) to 176	
	Fluctuation at 37°C in flask (±°C / °F)	0.1 / 0.18				
	Variation at 37°C in flask (±°C / °F)	0.5 / 0.90				
	Refrigerator (Hp)	-	1/6Hp	-	1/6Hp	
Shaking system	Motion type	Orbital				
	Amplitude size (mm / inch, dia.)	25.4 / 1		50.8 / 2		
	Speed range (rpm)	30 to 500		30 to 300		
	Accuracy	±1% of set speed (>100rpm) / ±1 (≤100rpm)				
	Timer	1 min. to 999 hr 59 min.				
	Max. load (kg / lbs)	15 / 33.1 at 500 rpm 25 / 55.1 at 400 rpm 35 / 77.2 at 300 rpm		20 / 44.1 at 300 rpm 35 / 77.2 at 200 rpm		
Dimension	Volume (L / cu ft)	270 / 9.5				
	Platform (WxD) (mm / inch)	755x520 / 29.7x20.5				
	Interior (WxDxH) (mm / inch)	894x634x480 / 35.2x25x18.9				
	Exterior (WxDxH) (mm / inch)	1128x854x1035 / 44.4x33.6x40.8				
	Net weight (Kg / lbs)	277 / 610.7	287 / 632.7		277 / 610.7	287 / 632.7
Electrical requirements (230V)	50 / 60Hz, 3.7A	60Hz, 5.6A	50Hz, 5.6A	50 / 60Hz, 3.7A	60Hz, 5.6A	50Hz, 5.6A
Cat. No.	AAH23342K	AAH23542K	AAH23541K	AAH23442K	AAH23642K	AAH23641K
Electrical requirements (120V)	60Hz, 7.3A	60Hz, 10A		60Hz, 7.3A	60Hz, 10A	
Cat. No.	AAH23375U	AAH23575U		AAH23475U	AAH23675U	

※Temp. change may occur during automatic defrost. (for ISF-7100R/7200R)

Benchtop model IST-3075(R) / 4075(R)

- Clear observation of samples
- Three side transparent acryl lid with bright LED lamps.
- Gas spring lid supports providing smooth motion, soft opening and closing.
- Stalled platform check.

Model		IST-3075	IST-3075R	IST-4075	IST-4075R			
Temp.	Range (°C / °F)	Amb. +5 to 80 / Amb. +9 to 176	Amb. -15 (Min. +15) to 80 / Amb. -27 (Min. +27) to 176	Amb. +5 to 80 / Amb. +9 to 176	Amb. -15 (Min. +15) to 80 / Amb. -27 (Min. +27) to 176			
	Fluctuation at 37°C in flask (±°C / °F)	0.1 / 0.18						
	Variation at 37°C in flask (±°C / °F)	0.5 / 0.90						
	Refrigerator (Hp)	-	1 / 6 HBP	-	1 / 6 HBP			
Shaking system	Motion type	Orbital						
	Amplitude size (mm / inch, dia.)	19.1 / 0.75						
	Speed range (RPM)	20 to 500						
	Accuracy	±1% of set speed (>100rpm) / ±1 (≤100rpm)						
	Timer	1 min. to 999 hr 59 min.						
	Max. load (kg / lbs)	10 / 22.0 at 500 rpm 15 / 33.1 at 400 rpm		14 / 30.9 at 500 rpm 21 / 46.3 at 400 rpm				
Dimension	Volume (L / cu ft)	53 / 1.9		83 / 2.9				
	Platform (WxD) (mm / inch)	350x350 / 13.8x13.8		450x450 / 17.7x17.7				
	Interior (WxDxH) (mm / inch)	410x410x320 / 16.1x16.1x12.6		510x510x320 / 20.1x20.1x12.6				
	Exterior (WxDxH) (mm / inch)	440x785x510 / 17.3x30.9x20.1		540x 890 x510 / 21.3x35x20.1				
	Net weight (Kg / lbs)	65 / 143.3	73 / 160.9		81 / 178.6	90 / 198.4		
Electrical requirements (230V)	60Hz, 4A	50Hz, 4A	60Hz, 5.5A	50Hz, 5.5A	60Hz, 4A	50Hz, 4A	60Hz, 5.5A	50Hz, 5.5A
Cat. No.	AAH23411K	AAH23422K	AAH23511K	AAH23522K	AAH23611K	AAH23622K	AAH23711K	AAH23722K
Electrical requirements (120V)	60Hz, 7.5A		60Hz, 10.1A		60Hz, 7.5A		60Hz, 10.1A	
Cat. No.	AAH23465U		AAH23565U		AAH23665U		AAH23765U	



Establish Jeio Tech Network by Gateway. Remote-monitor of operating status through a mobile phone.

Gateway (2.4GHz, 100~240V, 50/60Hz)
AAAQ1011

Universal Platform



Universal Platform

Accessories for Universal Platform



Flask Clamp
(Stainless steel / Plastic)



Funnel Clamp



Test Tube Rack



Microplate Holder

* Universal platform is optional.



Lab Sticker

* Universal platform is optional.

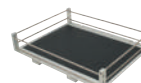
Set Accessories



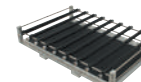
Spring Wire Rack



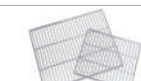
Dedicated Platform



Rubber Mat



Universal Attachment



Wire Shelve



Retractable Foot Caster

Description	ISS-7000(R)	ISS-3075(R)	ISS-4075(R)	ISF-7000(R)	IST-3075(R)	IST-4075(R)
Dedicated Platform (250ml) ¹⁾	AAA23637	AAA23611-V1	AAA23621-V1	AAA23634	AAA23611-V1	AAA23623-V1
Dedicated Platform (500ml) ²⁾	AAA23636	AAA23612-V1	AAA23622-V1	AAA23635	AAA23612-V1	AAA23622-V1
Rubber Mat	AAA23535	AAA31531	AAA31532	AAA23534	AAA23531	AAA23532
Universal Attachment	AAA23513	AAA23511-V1	AAA23512-V1	AAA23505	AAA23511-V1	AAA23512-V1
Lab Sticker	AAA30551	AAA30551	AAA30551	AAA30551	AAA30551	AAA30551
Wire shelve	-	EDA8235	EDA8233	-	-	-
Stand 1 with Stacking kits (600mm height for stacking 1 unit)	AAA23571	-	-	-	-	-
Stand 2 with Stacking kits (300mm height for stacking 2 units)	AAA23572	-	-	-	-	-
Retractable Foot Caster	-	AAA23801	AAA23802	-	-	-
Stacking Kit	AAA23573	AAA23811	AAA23812	-	-	-

Description	Model	ISS-7000(R)	ISS-3075(R)	ISS-4075(R)	ISF-7000(R)	IST-3075(R)	IST-4075(R)		
		Platform Size	755 x 520	350 x 350	450 x 450	755 x 520	350 x 350	450 x 450	
Universal Platform	Cat. No.	AAA23503-V4	AAA23501-V3	AAA23502-V3	AAA23503-V3	AAA23501-V3	AAA23502-V3		
Flask Clamp (Stainless steel)	50 ml	AAA23550	88	36	49	88	36	49	
	100 ml	AAA23551	68	24	39	68	24	39	
	250 ml	AAA23552	39	14	24	39	14	20	
	300 ml	AAA23556	39	14	24	39	14	20	
	500 ml	AAA23553	28	9	16	28	9	16	
	1 L	AAA23554	18	6	9	18	6	9	
	2 L	AAA23555	11	4	6	11	4	5	
	2.8 L	AAA23557	8	2	5	8	2	4	
Flask Clamp (Plastic)	4 L	AAA23558	6	-	4	6	-	-	
	6 L	AAA23559	-	-	2	5	-	-	
	50 ml	AAA30570	88	36	49	88	36	49	
	100~125 ml	AAA30571	48	19	29	48	19	29	
	200 ml	AAA30572	33	13	21	35	13	21	
	250 ml	AAA30573	33	13	19	35	13	19	
	300 ml	AAA30574	33	12	19	35	12	19	
	500 ml	AAA30575	24	9	12	24	9	12	
Funnel Clamp	1 L	AAA30576	12	5	9	12	4	9	
	2 L	AAA30577	8	4	5	8	2	4	
	250 ml	AAA23562	15	4	6	15	4	6	
	500 ml	AAA23563	10	3	4	10	2	4	
	1 L	AAA23564	7	-	3	7	-	3	
	2 L	AAA23565	5	-	-	5	-	-	
	Test Tube Rack ³⁾	Ø8mm (86ea)	AAA23581	7	2	4	7	2	4
		Ø10mm (86ea)	AAA23582	7	2	4	7	2	4
Ø12mm (58ea)		AAA23583	7	2	4	7	2	4	
Ø14mm (58ea)		AAA23584	7	2	4	7	2	4	
Ø17mm (32ea)		AAA23585	7	2	4	7	2	4	
Ø25mm (19ea)		AAA23586	7	2	4	7	2	4	
Ø30mm (10ea)		AAA23587	7	2	4	7	2	4	
Ø35mm (10ea)		AAA23594	7	2	4	7	2	4	
Ø50mm (4ea)		AAA23593	7	2	4	7	2	4	
Single		AAA23654	25	8	15	25	8	15	
Microplate Holder	Tower	AAA23651	21	6	10	21	5	8	
	Flat A (Large)	AAA23652	4	-	2	4	-	2	
	Flat B (Small)	AAA23653	6	2	3	6	2	2	

Description	ISS-7000(R)	ISS-3075(R)	ISS-4075(R)	ISF-7000(R)	IST-3075(R)	IST-4075(R)
Cat. No.	AAA23526	AAA31521-V1	AAA31522-V1	AAA23514	AAA23521-V1	AAA23522-V2
Spring Wire Rack	50 ml	45	16	25	45	16
	100 ml	28	9	16	28	9
	250 ml	18	4	9	18	4
	300 ml	18	4	9	18	4
	500 ml	15	4	5	15	4
	1 L	10	2	4	10	2
	2 L	6	1	2	6	1
2.8 L	4	1	2	4	1	

1) Platform set with maximum loading capacity of 250ml Flask clamps(stainless steel).

2) Platform set with maximum loading capacity of 500ml Flask clamps(stainless steel).

3) No declination.