

extreme temperature dry baths



Cleaver Scientific's Extreme Temperature dry baths have a working temperature range of -10°C to 100°C, making them broadly suited to techniques that use the extremities of temperature, such as DNA ligation (12°C) and denaturation (96°C). Each dry bath comprises a large conspicuous 2.6" LCD screen, and has operation modes for constant temperature and time, annealing and 1 to 4 programmable steps, each with a maximum of 9 cycles. The Extreme Temperature dry baths also benefit from micro-processor control and specially designed aluminium block inserts with superior cooling and heating properties. The Superior Extreme Temperature dry bath has a shallower block insert with enhanced thermal transfer properties. Optional function control software is available.

Ordering Information

Dry Baths			
MC-01N	Extreme Temperature Dry Bath Incubator; without block 110/220V	MC-B0.5+1.5	Combination: 1.5 or 2.0 ml tube, 15 well and 0.5 ml tube, 15 wells
MC-01S	Superior Temperature Dry Bath Incubator; without block 110/220V	(On the same side)	
Accessories			
MC-MP01	For Microplate; Titerplate (Plane bottom)	MC-B0.2+0.5+1.5	Combination: 0.2 ml tube (or Strip tube for 8 wells), 24 wells, 1.5 or 2.0 ml tube, 10 well and 0.5 ml tube, 10 wells
MC-MP02	For 96 wells Deep Microplate; PCR Plate or 0.2 ml PCR Strip Tube	MC-B0.2H	(1/2) Half Block for 0.2 tube or PCR Strip tube for 8 wells, 40 wells
MC-B0.5	For 0.5 ml tube, 30 wells	MC-B0.5H	(1/2) Half Block for 0.5 ml tube, 15 wells
MC-B1.5	Well size: 10 mm, For 1.5 or 2.0 ml tube, 30 wells	MC-B1.5H	(1/2) Half Block for 1.5 or 2.0 ml tube, 15 wells

Other blocks also available

For 110 V AC, please add '-\$' as a suffix to the appropriate code



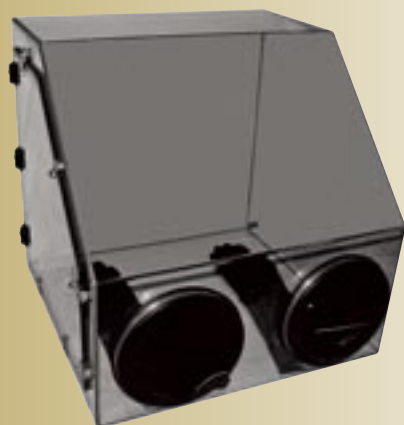
stirring water baths

A powerful magnetic stirring mechanism combined with high wattage heating allows each Cleaver Scientific stirring water bath to maintain temperatures to a maximum 99°C. Available in 10 and 20 litre bath capacities, these water baths comprise as many as 3 stirrers for a maximum stirring speed of 1800rpm. Each bath includes a conspicuous front-panel LCD, reproducible microprocessor control of temperature within 0.1°C increments, a corrosion resistant stainless steel interior and automatic alarm and safety shutdown mechanism. Optional data logging and PC control software is also available.

Ordering Information

Stirring Water Baths		ACCESSORIES	
SWB-10L-1	Stirring Water Bath 10L with 1 built-in stirrer	SWB-LID10	Transparent lid for 10L stirring water bath
SWB-10L-2	Stirring Water Bath 10L with 2 built-in stirrers	SWB-LID20	Transparent lid for 20L stirring water bath
SWB-20L-1	Stirring Water Bath 20L with 1 built-in stirrer		
SWB-20L-3	Stirring Water Bath 20L with 3 built-in stirrers		

For 110 V AC, please add '-\$' as a suffix to the appropriate code



glove boxes

Available in 4 sizes, Cleaver Scientific glove boxes are an ideal cost-effective solution for those scientists performing functions where containment is paramount. A robust construction from non-reactive polycarbonate allows each glove box to be used with inert gases such as helium, nitrogen and argon, making them well suited to functions requiring the exclusion of atmospheric oxygen and moisture. Each box, which includes hermetically-sealed gauntlets and a side panel as standard, provides a safe barrier between the worker and any potential contaminant. These boxes may also be supplied with airlocks and pressure-relieving valves at little extra cost.

Ordering Information

CSL-GB24	Standard 2 port 60 x 60 x 60cm	For additional accessories, please add the suffixes as follows (e.g. CSL-GB24A)	
CSL-GB36	Standard 2 port 90 x 60 x 60cm	A	Air Lock only
CSL-GB48	Standard 2 port 120 x 60 x 60cm	V	Valves only
CSL-GB60	Standard 2 port 150 x 60 x 60cm	AV	Air Lock and Valves