



# CG Series

## WALK-IN

PLANT GROWTH

DATA SHEET

# CG SERIES WALK-IN



## PLANT GROWTH

### Product Overview/Applications

The CG series of walk-in chambers provides an outstanding growth area-to-footprint ratio. Upward airflow is delivered using Conviron's *Unifloor*® system allowing plants to be distributed throughout the entire floor area. These chambers are typically used for both short and tall plant applications requiring moderate to high level light intensities. Multiple lamp canopies enable researchers to vary the distance from the light sources to research specimens. Temperature uniformity is assured via an upward airflow pattern.

### Lighting

The standard lighting package for the CG series is a moderate level light intensity which incorporates both T5 fluorescent and incandescent lamps. This helps to ensure a broad based light spectrum that is ideally suited for plant growth. Multiple lighting levels are provided with the ability to program lamp groups separately. Manually adjustable *Lightright*™ canopies enable the researcher to easily raise and lower the lamps to the desired height. Higher light intensities area available on this model.

### Airflow

Uniform airflow is introduced to the growth area through Conviron's patented *Unifloor*® which produces a precise volume of air, directed upward through the plant material. Filtered and adjustable fresh air intake and exhaust openings enable researchers to exchange air to the chamber in a controlled manner.

### Refrigeration

Cooling for the CG series is provided by a self-contained water-cooled condensing unit with hot gas bypass for continuous compressor operation. An electronic modulating valve provides tight temperature control while ensuring quiet operation. Pressure transducers are included for monitoring the status of the refrigeration system. Alternative refrigeration

methods are available depending on site-specific and/or user-defined requirements. Consult the factory for heat rejection information and other refrigeration options.

### Experiment Protection

User programmable "set and forget" alarms track the chamber's operation versus user-defined set points. This allows for exceptionally accurate monitoring without the need for adjustment every time the set point is redefined. Backup "high/low" alarms provide a further level of protection while visual and audible notification is provided when any alarm is activated. Contacts for connection to a building management system are also included.

### Key Product Attributes

- Multiple lamp canopies for varying plant maturity levels
- Efficient growth area-to-footprint ratio
- *Lightright*™ for enhanced flexibility of light intensity
- Product certifications/markings; cCSA<sub>US</sub> (NRTL), CE



### Performance Data

	Temperature Range (°C)	Interior Capacity	Growth Area	Growth Height	Exterior Dimensions (WxDxH)	Light Intensities (6in. from lamp)	Electrical Service	Weight
<b>CG72</b>	10–40 lights ON	480ft <sup>3</sup>	72ft <sup>2</sup>	80"	116" x 150.5" x 114.25"	750 μmoles/m <sup>2</sup> /s	120/208-3Ø-60Hz	4860lb.
	4–40 lights OFF	(13600l)	(6.7m <sup>2</sup> )	(2030mm)	2950 x 3825 x 2900 (mm)	@ 25°C	220/380-3Ø-50Hz	(2205kg)
<b>CG108</b>	10–40 lights ON	720ft <sup>3</sup>	108ft <sup>2</sup>	80"	116" x 208" x 114.25"	750 μmoles/m <sup>2</sup> /s	120/208-3Ø-60Hz	5640lb.
	4–40 lights OFF	(20300l)	(10m <sup>2</sup> )	(2030mm)	2950 x 5285 x 2900 (mm)	@ 25°C	220/380-3Ø-50Hz	(2558kg)

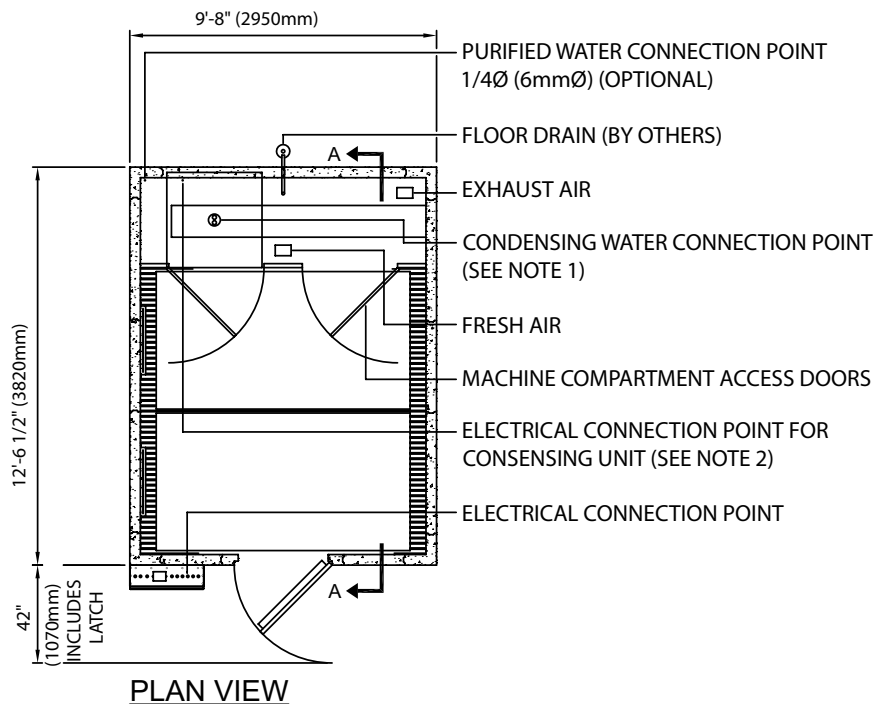
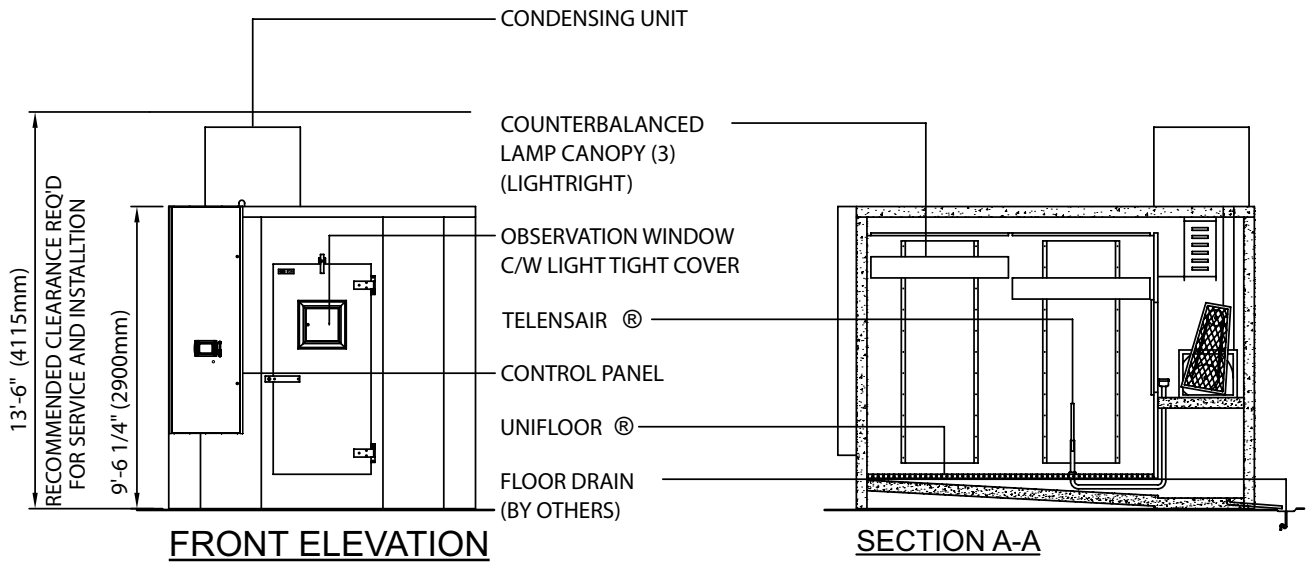
# CONVIRON MODEL CG SERIES

## PLANT GROWTH CHAMBER



### NOTES:

1. STANDARD REFRIGERATION SYSTEM IS WATER COOLED (1"Ø (25mmØ) CONNECTION).
2. CONDENSING UNIT REQUIRES SEPARATE ELECTRICAL SERVICE (60HZ APPLICATION ONLY).
3. DEPTH DIMENSION IS CHAMBER SIZE ONLY. DIMENSION DOES NOT INCLUDE DOOR LATCH.
4. LENGTH AND WIDTH DIMENSIONS ±1/4 (6mm). HEIGHT DIMENSION ±1" (25mm).



### CG72 PLANT GROWTH CHAMBER

DATE ISSUED: 08/19/09

DRAWING NO. 231176

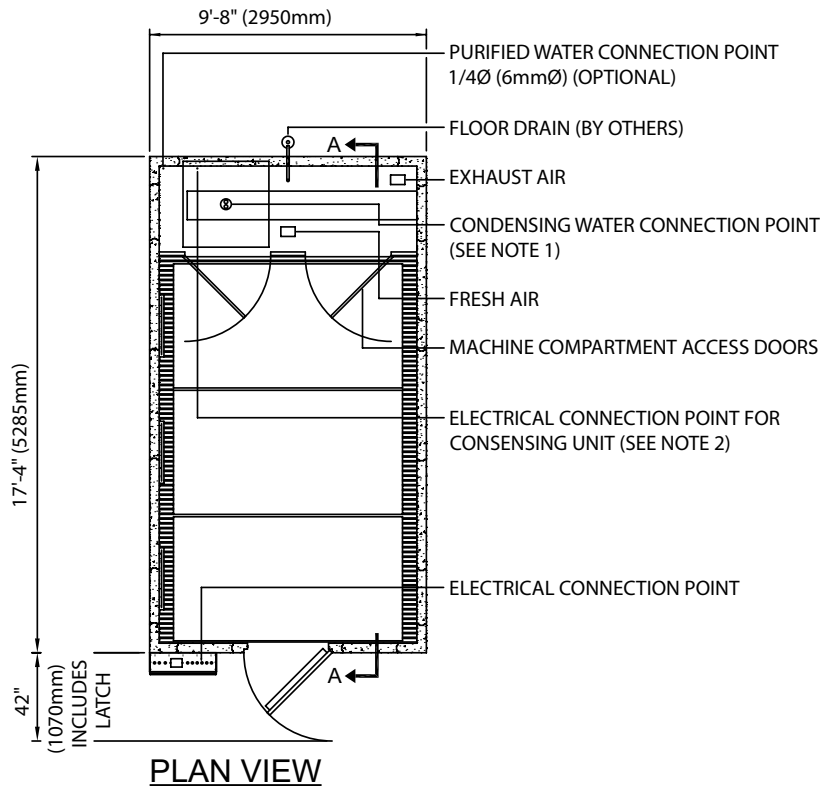
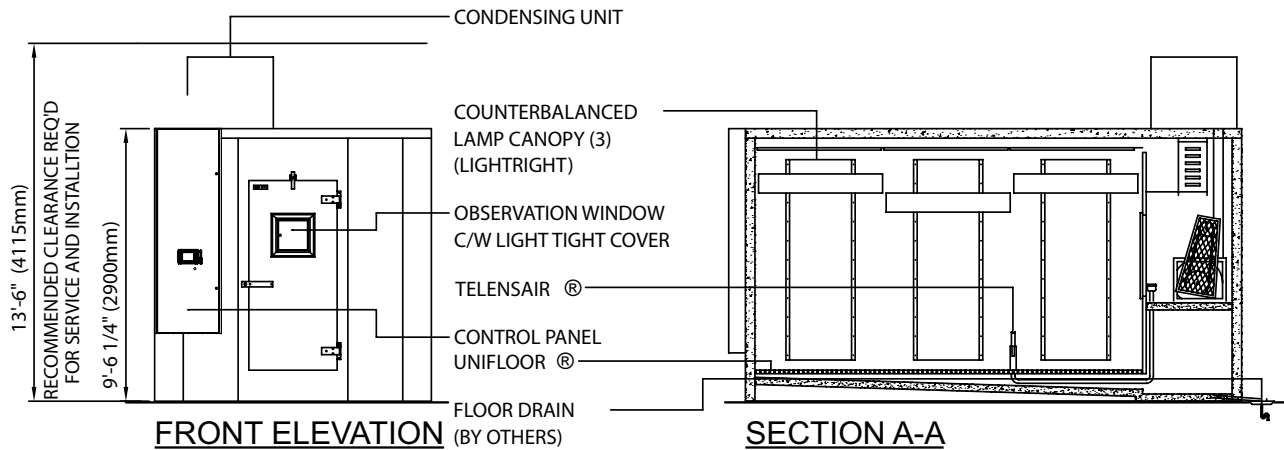
# CONVIRON MODEL CG SERIES

## PLANT GROWTH CHAMBER



**NOTES:**

1. STANDARD REFRIGERATION SYSTEM IS WATER COOLED (1"Ø (25mmØ) CONNECTION).
2. CONDENSING UNIT REQUIRES SEPERATE ELECTRICAL SERVICE (60HZ APPLICATION ONLY).
3. DEPTH DIMENSION IS CHAMBER SIZE ONLY. DIMENSION DOES NOT INCLUDE DOOR LATCH.
4. LENGTH AND WIDTH DIMENSIONS ±1/4 (6mm). HEIGHT DIMENSION ±1" (25mm).



**CG108 PLANT GROWTH CHAMBER**

DATE ISSUED: 08/19/09

DRAWING NO. 231175

